

4. Wait 30 seconds
5. Open browser on PC and enter the following: 192.168.0.188
6. Log in, User Name is "user" and Password is "changeme" (without inverted commas)

Please refer to Appendix A "Connecting to an Illuminator Locally" in the User Manual for detailed information.

Configuring Your Illuminator

Once you have logged in, click "Settings", then click "Change Settings" and:

1. Set date and time
2. Set username and password for security
3. Set Location & Lighting Setup– to your site name, help person details, lighting details and costs
4. Optional - set up Status Inputs
5. Optional - set up Alarms and what you want to happen on the alarm
6. Set up Network parameters
7. Set up E-mail parameters
8. Set up your automatic reports
9. Exit Change Settings

Please refer to "Setting up an Illuminator for the first time" in the User Manual for detailed information.

Click "Users" on the main screen to set up a unique PIN for each user and choose the fields they can access by clicking "Change" next to that user.

NOTE: the first user is the administrator with permanent access to all fields

Click "Lights" on the main screen and set periods in each weekday during which normal users can control lights. Click any link in the "Today's Availability" column to change the control periods for all fields.

Please refer to "Normal Operation" in the User Manual for detailed information.

Finally - it is strongly advised that you check e-mail functionality as described in Appendix D of the User Manual.

Illuminator Quick Start Guide, revised 13/04/2016
© Halytech 2016
Tel: (02) 8814 5235 Email: sales@halytech.com.au
PO Box 6983 Baulkham Hills Business Centre NSW 2153
ABN 51 094 853 068



Illuminator Quick Start Guide

V2.26

This guide is not a replacement for the User Manual. Please refer to the complete Illuminator manual available for download from:
<http://www.halytech.com.au/images/downloads/illuminator>

Parts List (included in the box)

- 1 x Illuminator
- 1 x Whip antenna and bracket
- 1 x Comms cable (red Ethernet crossover)
- 1 x connector bag containing:
 - 4 x 8-pin I/O connectors
 - 2 x 2-pin power connectors
 - 1 x 4-pin Aux connector
 - 8 x 120-ohm resistors (for 4-20mA inputs)
 - 8 x protection diodes (to protect control outputs)
- 1 x Quick Start Guide (this document)

NOTE: A new Illuminator is shipped without a SIM card

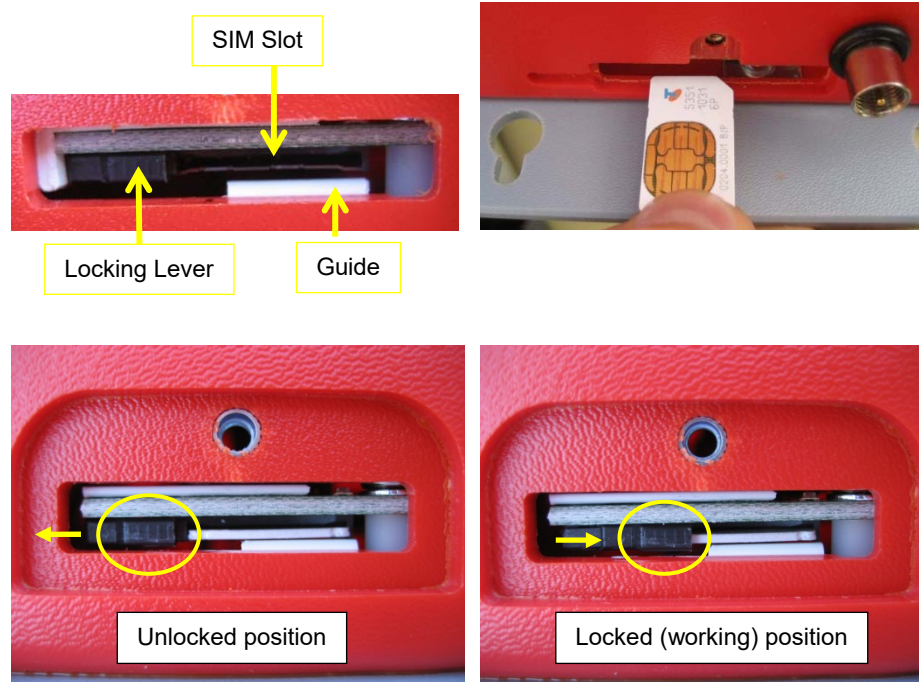
Common optional components (purchased separately)

- 15V DC power supply
- 12V DC SLA (sealed lead acid) battery
- Powder-coated steel enclosure
- Keypad
- External relays and contactors
- Electricity meters

Installing a SIM Card

You will need a full-size SIM card with SMS and internet services enabled. To connect to an Illuminator remotely to add users, change PINs etc., obtain a SIM card on a post-paid plan from Telstra and request that a **dynamic public IP address** added to you SIM. Simply advise Telstra to set the following parameters on your SIM: 'GPTEXB3' and 'GPCORPB3'

1. Put the SIM card in a standard mobile phone and disable any PINs.
2. Unscrew the modem access cover located on the top of the Illuminator case, next to the antenna connector.
3. Look at the SIM slot and ensure the black locking lever is in the unlocked (left) position. A small flat screwdriver is useful. Very little force is required.
4. Gently push the SIM card into the slot so that it is level with the locking lever, notch-first and contacts-up. The last few mm is spring-loaded and you will feel it click into place.
5. Gently slide the black locking lever to the right until it clicks.
6. Screw the modem access cover



Please refer to Appendix C "Connection to Mobile Network" in the User Manual.

Connecting the Antenna and Power

1. Connect the antenna to the jack next to the SIM card holder– finger tight only
2. Connect Power or Solar Panel and Battery using the supplied connectors to the CHG and BAT terminals respectively.

Please refer to "Physical Connections" in the User Manual for detailed information.

Connecting Controls

Using the connectors provided - connect Controls as per manual

- You must use external isolation relays as the inbuilt controls cannot switch mains power. Use supplied protection diodes on the external isolation relays.

Please refer to "Physical Connections" in the User Manual for detailed information.

Connecting Inputs (Optional)

Using supplied connectors, connect Inputs as per manual

- Switch, pulse and event inputs - connected directly
- 4-20mA – connect supplied 120 Ohm resistor across input
- Voltage inputs – connected via dividing resistors (not supplied)
- If metering is enabled, the input number and control number used for the electricity meter and contactor respectively must match.

Please refer to "Physical Connections" in the User Manual for detailed information.

Connecting the Illuminator to your PC

1. Make sure that your PC is not connected to the Illuminator
2. Turn Illuminator on by pressing the button and holding it till the LCD backlighting turns on
IMPORTANT: the backlighting must be ON before a connection can be made
3. Using the supplied red LAN crossover cable connect your PC to the Illuminator